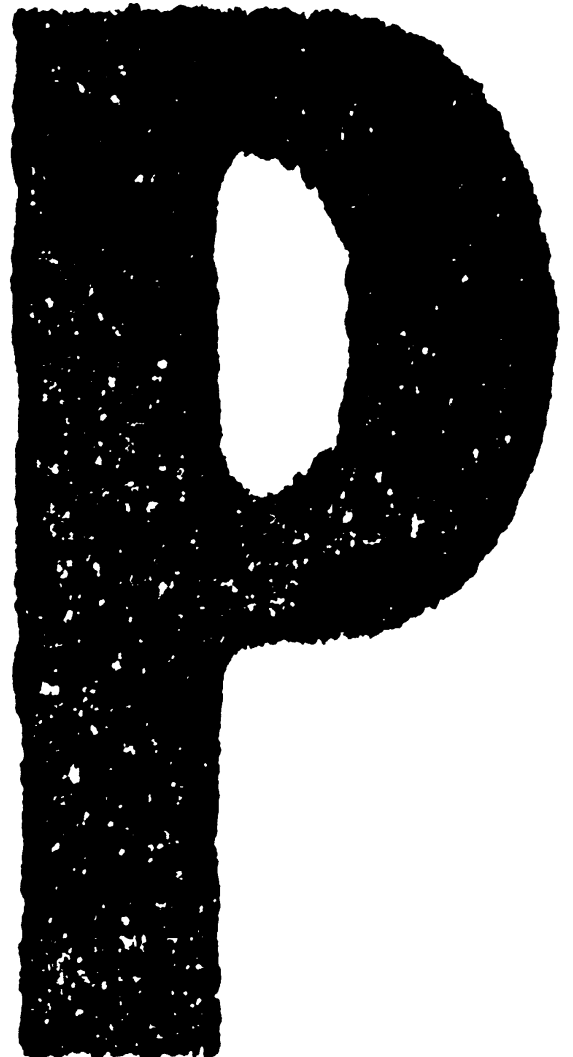


TOSHIBA

SERVICE PARTS LIST

PAPER FEED PEDESTAL

MD-1009



Copyright 2000

TOSHIBA TEC CORPORATION

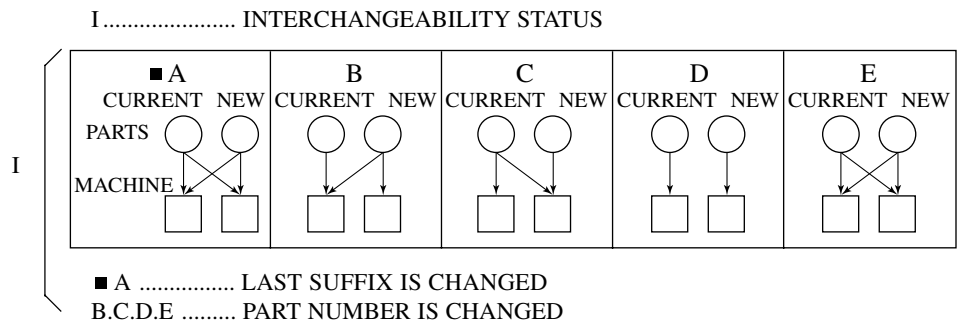
EXPLANATION OF SERVICE-PARTS LIST

1. HOW TO READ THE PARTS LIST

- (1) Number of pieces
The number of pieces in the list denotes total pieces used per unit. But the numbers in the list for PACKING MATERIAL and ACCESSORY denote total pieces used per machine.
- (2) One pack of screws in the list includes 50 pieces.
- (3) ABBREVIATED CODES

QTY/PAC	QTY	one piece
	PAC	one pack
	1/P	one piece packed in polyethylene bag
	1/S	one piece packed in special pack
	1/C	one piece packed in carton box
	1/PP	one piece packed in paper and polyethylene bag
	1/KP	one piece packed in polyethylene bag with cardboard
	1/D	one piece packed in polyethylene-cushion bag
1/SB	one piece packed in shielding bag	
N/A	not available	

P	P	PURPOSE
	A	ADD
	B	DELETE
	C	CHANGE
	D	QTY, CHANGE
	E	MISENTRY
	F	OMISSION



2. HOW TO PLACE ORDER FOR PARTS

- (1) The parts handled as service parts are only those with their "QTY/PACK" column listed with a quantity other than "N/A***" or "SUPPLY".
Those parts with "N/A***" are listed only for the purpose of showing the mechanical construction, those listed with "SUPPLY" are handled only as a sales item, and therefore both types of parts are not supplied as service parts.
- (2) Orders for any parts which form a component of a semi-assembled unit are not acceptable.
Note: All the screws and nuts used are ISO standard.

3. REGION

NAD	115V/60Hz, UL & CSA
TWD	110V/60Hz, TAIWAN
SAD	127V/60Hz, SAUDI ARABIA
ASD	220V 50/60Hz, ASIA, etc.
AUD	240V/50Hz, AUSTRALIA
MJD	230-240V 50/60Hz, EUROPE
UKD	230-240V 50/60Hz, UNITED KINGDOM

NOTICE EXPLICATIVE DE LA LISTE DES PIÈCES DE RECHANGE

1. COMMENT UTILISER LA LISTE DES PIÈCES DE RECHANGE

(1) Nombre de pièces

Le nombre de pièces indiqué sur la liste est le nombre total de pièces utilisées pour chaque unité.

Toutefois, le nombre indiqué sur la liste EMBALLAGE ACCESSOIRES est le nombre total de pièces utilisées pour chaque machine.

(2) Un paquet de vis indiqué sur la liste contient 50 vis.

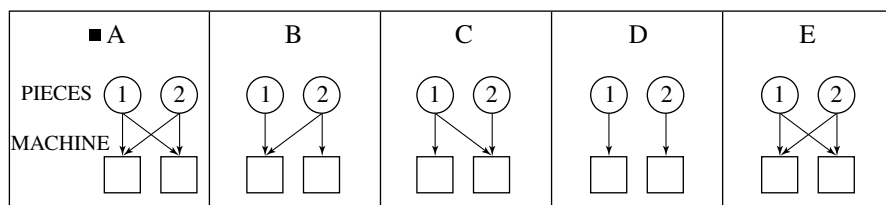
(3) ABREVIATIONS

Q'TY/PAC	QTY	une pièce
	PAC	un paquet
	1/P	une pièce emballée dans un sac en polyéthylène
	1/S	une pièce emballée dans un sac spécial
	1/C	une pièce emballée dans une boîte en carton
	1/PP	une pièce emballée dans un sac en papier et en polyéthylène
	1/KP	une pièce emballée dans un sac en polyéthylène avec carton
	1/D	une pièce emballée dans un sac rembourré en polyéthylène
	1/SB	une pièce emballée dans
	N/A***	non disponible

P BUT

P	A	AJOUTER
	B	SUPPRIMER
	C	MODIFIER
	D	CHANGEMENT DE QUANTITE
	E	INSCRIPTION ERRONEE
	F	OMISSION

I INTERCHANGEABILITE



① ACTUELLE ② NOUVELLE

■ A LE DERNIER SUFFIXE EST CHANGE

B.C.D.E LE NOMBRE DE PIÈCES EST CHANGE

2. COMMENT COMMANDER LES PIÈCES

(1) Les pièces de rechange sont uniquement celles qui sont mentionnées dans la colonne "Q'TY/PACK" avec une quantité autre que "N/A***" ou "SUPPLY".

Les pièces dans la colonne "N/A***" sont mentionnées uniquement dans le but d'indiquer la construction mécanique. Les pièces dans la colonne "SUPPLY" sont destinées uniquement à la vente. Par conséquent, ces deux types de pièces ne sont pas fournies en tant que pièces de rechange.

(2) Les commandes de toute pièce formant un élément ou une unité semi-assemblée ne seront pas acceptées.

Nota: Toutes les vis et touts le écrous seront conformes au code ISO.

3. PAYS

NAD	115V/60Hz, UL & CSA
TWD	110V/60Hz, TAIWAN
SAD	127V/60Hz, ARABIE SAOUDITE
ASD	220V
	50/60Hz, ASIE, etc.
AUD	240V/50Hz, AUSTRALIE
MJD	230-240V
	50/60Hz, EUROPE
UKD	230-240V
	50/60Hz, ROYAUME-UNI

ERKLÄRUNG DES ERSATZTEIL-KATALOGES

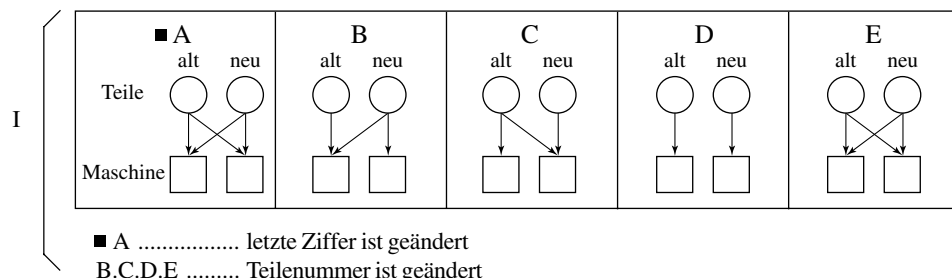
1. WIE LIEST MAN DIE TEILELISTE?

- (1) Die Teileanzahl
Die Anzahl der Teile in der Liste, drücken die gesamten Teile pro Verpackungseinheit aus. Aber die Zahl in der Liste "Packing" (Verpackung) und "Accessory" (Zubehör) beschreibt die gesamte Teileanzahl pro Maschine.
- (2) Eine Verpackungseinheit SCHRAUBEN enthält 50 Stück.
- (3) Abkürzungscode

QTY/PAC	{	QTY	Stück
		PAC	Packung
		1/P	ein Stück in einem Plastikbeutel
		1/S	ein Stück in einer Spezialverpackung
		1/C	ein Stück in einem Karton
		1/PP	ein Stück in Papier und einem Plastikbeutel
		1/KP	ein Stück in einem Plastikbeutel mit Pappdeckel
		1/D	ein Stück in einem gepolsterten Plastikbeutel
N/A	nicht lieferbar		
1/SB	ein Stück in einer Schutzhülle		

P	{	P	Zweck
		A	Zusätzlich
		B	Entfernen
		C	Ändern
		D	Menge geändert
		E	Fehlangebe
		F	Weglassen

I Austauschbar untereinander



2. WIE WERDEN ERSATZTEILE BESTELLT?

- (1) Die Ersatzteile für den Service haben in der Spalte "QTY/PACK" eine Nummer.
Die Teile mit der Angabe "N/A***" sind nur aufgeführt, um die technische Konstruktion zu zeigen und sind einzeln nicht lieferbar.
Die Bezeichnung "SUPPLY" weist darauf hin, daß dieses Teil als Zubehör gehandelt wird und beim Verkauf bestellt werden muß.
- (2) Bestellungen für Einzelteile, die einer Baueinheit angehören können nicht akzeptiert werden.
Hinweis: Alle Schrauben und Muttern werden nach dem ISO-Standard hergestellt.

3. REGION

NAD	115V/60Hz, UL & CSA
TWD	110V/60Hz, TAIWAN
SAD	127V/60Hz, SAUDI-ARABIEN
ASD	220V 50/60Hz, ASIEN, usw.
AUD	240V/50Hz, AUSTRALIEN
MJD	230-240V 50/60Hz, EUROPA
UKD	230-240V 50/60Hz, GROSSBRITANNIEN

SPIEGAZIONE DELLA LISTA DEI PEZZI DI RICAMBIO

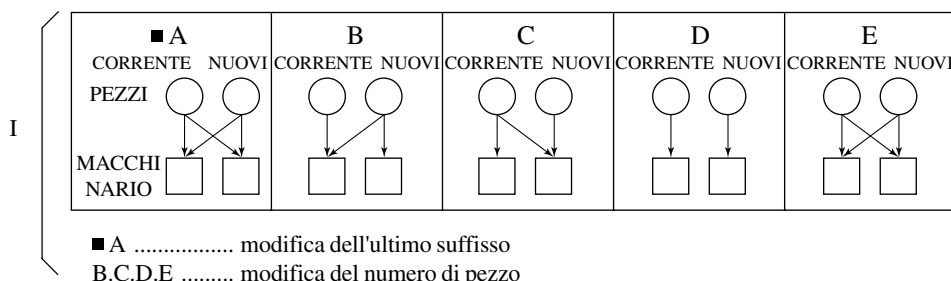
1. COME LEGGERE LA LISTA DEI PEZZI DI RICAMBIO

- (1) Numero dei pezzi
Il numero dei pezzi indica il totale dei pezzi per elemento. I numeri nella lista del materiale d'imballaggio e accessori indicano il totale dei pezzi per macchina.
- (2) Nella lista, un pacco di viti contiene 50 viti.
- (3) ABBREVIAZIONI

QTY/PAC	QTY un pezzo PAC un pacco 1/P un pezzo imballato in sacco di polietilene 1/S un pezzo imballato in pacco speciale 1/C un pezzo imballato in scatola di cartone 1/PP un pezzo imballato in sacco di polietilene e carta 1/KP un pezzo imballato in sacco di polietilene con cartone 1/D un pezzo imballato in sacco morbido di polietilene 1/SB un pezzo imballato in sacco di protezione N/A non disponibile
---------	---

P	P scopo A aggiunta B annullamento C modifica D modifica QTY E ingresso errato F omissione
---	---

I stato di intercambiabilità



2. ORDINAZIONE DEI PEZZI

- (1) I pezzi usati come pezzi di ricambio sono elencati nella colonna "QTY/PACK" con una quantità differente da "N/A****" o "SUPPLY".
I pezzi con "N/A****" sono elencati solamente per mostrare la costruzione meccanica e quelli con "SUPPLY" sono elencati solamente come articoli di vendita: ciò significa che questi due tipi di pezzi non sono forniti come pezzi di ricambio.
- (2) L'ordinazione dei pezzi non viene accettata quando questi pezzi formano un componente di un messo elemento.
Nota: Tuttle le viti e i dadi sono standard ISO.

3. NAZIONE

NAD	115V/60Hz, UL & CSA
TWD	110V/60Hz, TAIWAN
SAD	127V/60Hz, ARABIA SAUDITA
ASD	220V 50/60Hz, ASIA, ecc.
AUD	240V/50Hz, AUSTRALIA
MJD	230-240V 50/60Hz, EUROPA
UKD	230-240V 50/60Hz, GRAN BRETAGNA

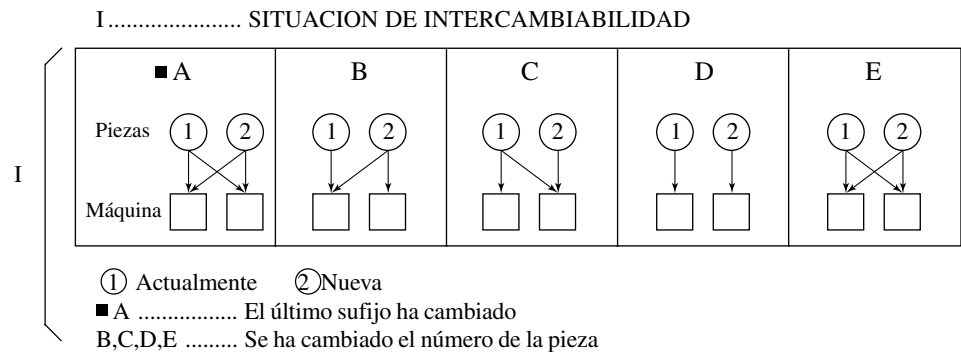
EXPLICACION DE LA LISTA DE PIEZAS DE SERVICIO

1. Cómo se lee la lista de piezas

- (1) El número de piezas
El número de piezas en la lista especifica las piezas totales usada pou unidad, mientras que el número en la lista para MATERIAL DE EMBALAJE y ACCESORIOS especifica las piezas totales usadas por máquina.
- (2) En el paquete de tornillos se incluyen 50 unidades.
- (3) Códigos abreviados

QTY/PAC	{	QTY	una pieza
		PAC	una paquete
		1/P	una pieza empaquetada en la bolsa de politileno
		1/S	una pieza empaquetada en paquete especial
		1/C	una pieza empaquetada en caja de cartón
		1/PP	una pieza empaquetada en papel y bolsa de politileno
		1/KP	una pieza empaquetada en bolsa de politileno con cartón
		1/D	una pieza empaquetada en bolsa almohadillada de politileno
1/SB	una pieza empaquetada en una		
N/A	bolsa protegida		

P	{	P	PROPOSITO
		A	AÑADIR
		B	BORRAR
		C	CAMBIO
		D	CANTIDAD, CAMBIO
		E	ENTRADA ERRONEA
		F	OMISION



2. Cómo realizar un pedido de piezas

- (1) Las piezas consideradas como piezas de servicio son sólo aquellas designadas con Q'TY/PACK y no las designadas con N/A ... o SUPPLY.
Aquellas piezas con N/A ... se ponen en lista sólo con el propósito de mostrar la construcción mecánica. Aquéllas piezas designadas bajo SUPPLY se consideran sólo como un artículo para ventas y por lo tanto ambos tipos de piezas no se consideran como piezas de servicio.
- (2) Los pedidos para cualquier pieza que forme un componente de la unidad semiensamblada no será aceptados.
NOTA: todos los tornillos y tuercas son del estandar ISO.

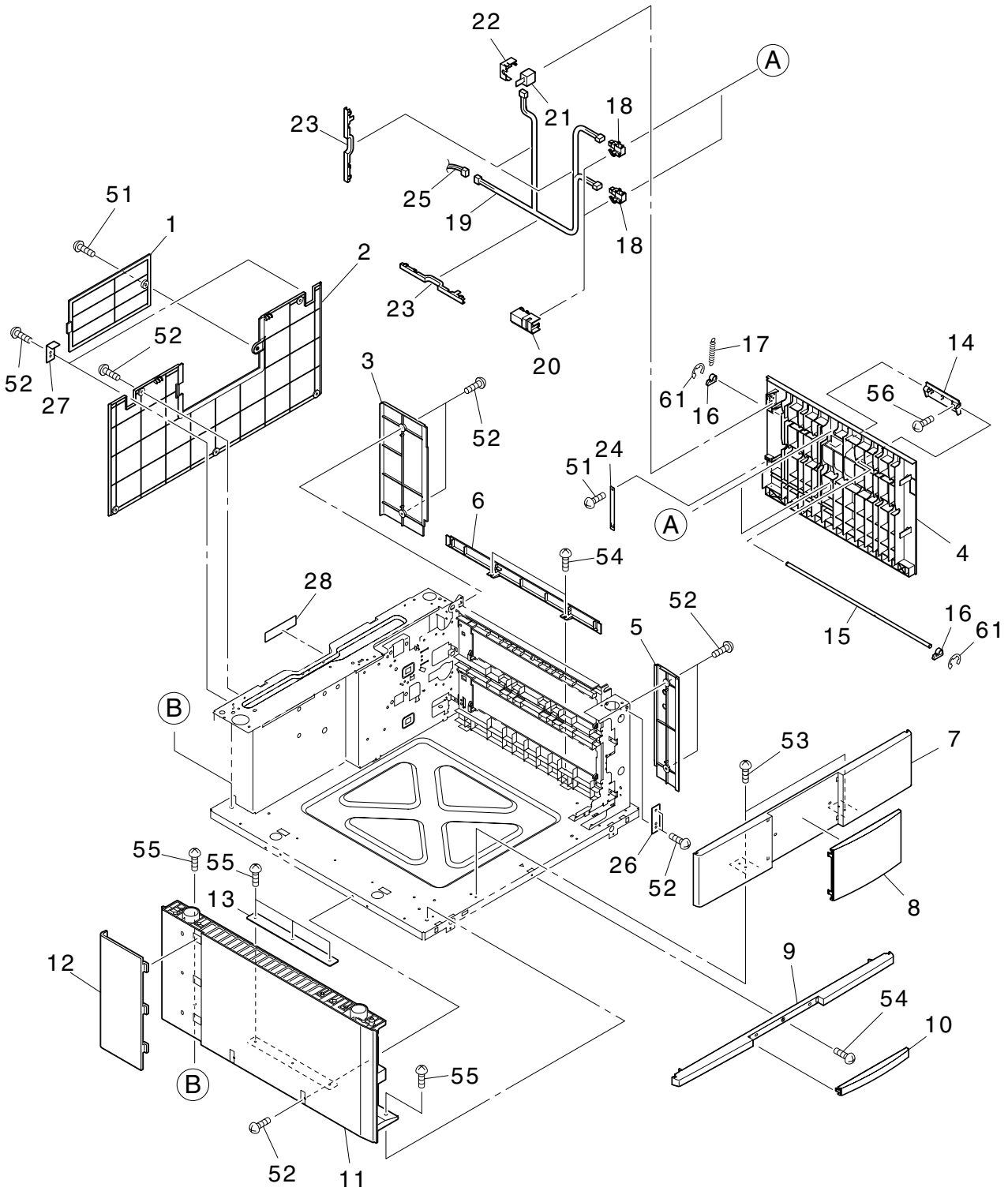
3. PAISES

NAD	115V/60Hz, UL & CSA
TWD	110V/60Hz, TAIWAN
SAD	127V/60Hz, SAUDI ARABIA
ASD	220V
	50/60Hz, ASIA, etc.
AUD	240V/50Hz, AUSTRALIA
MJD	230-240V
	50/60Hz, EUROPA
UKD	230-240V
	50/60Hz, GRAN BRETAÑA

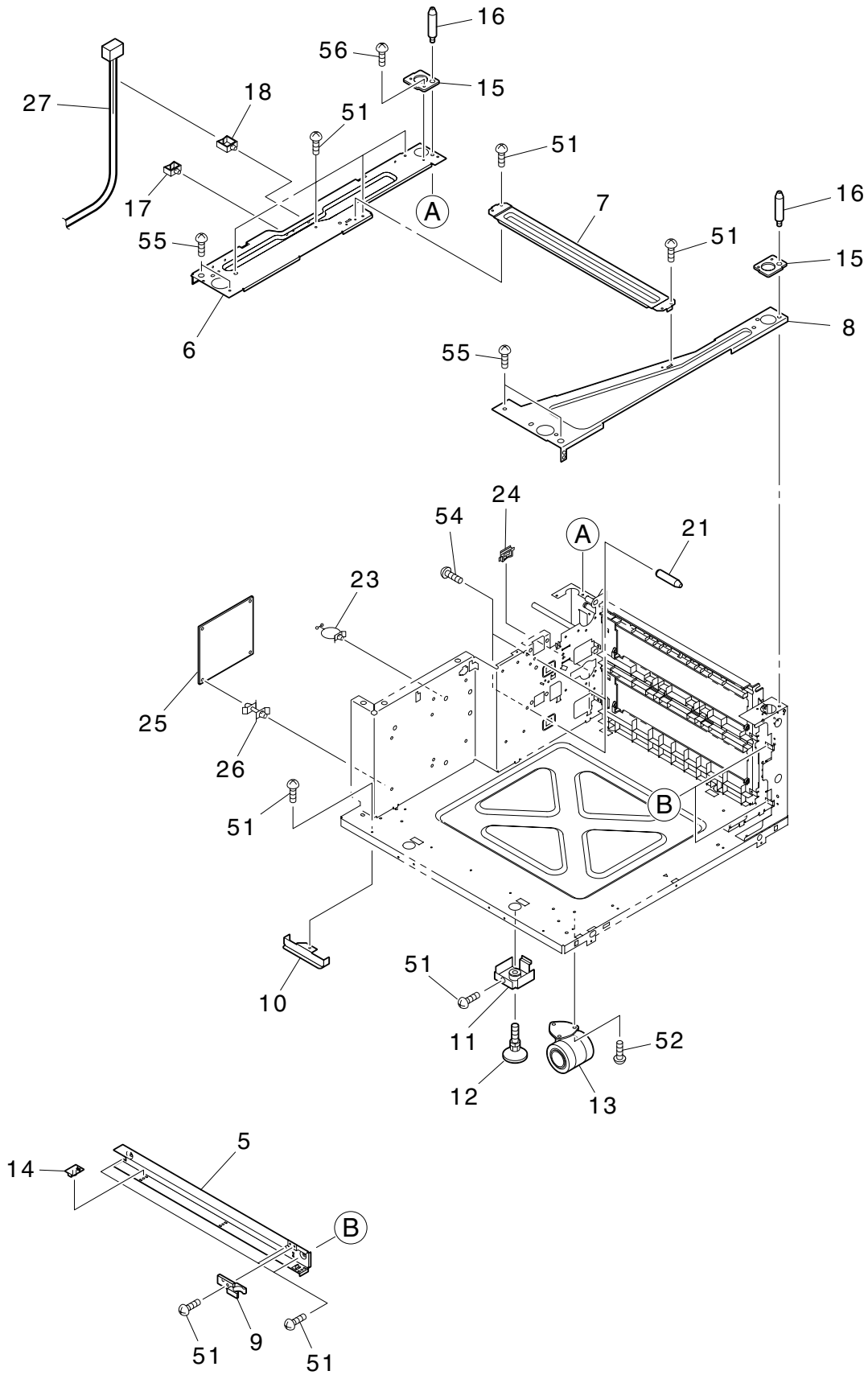
CONTENTS

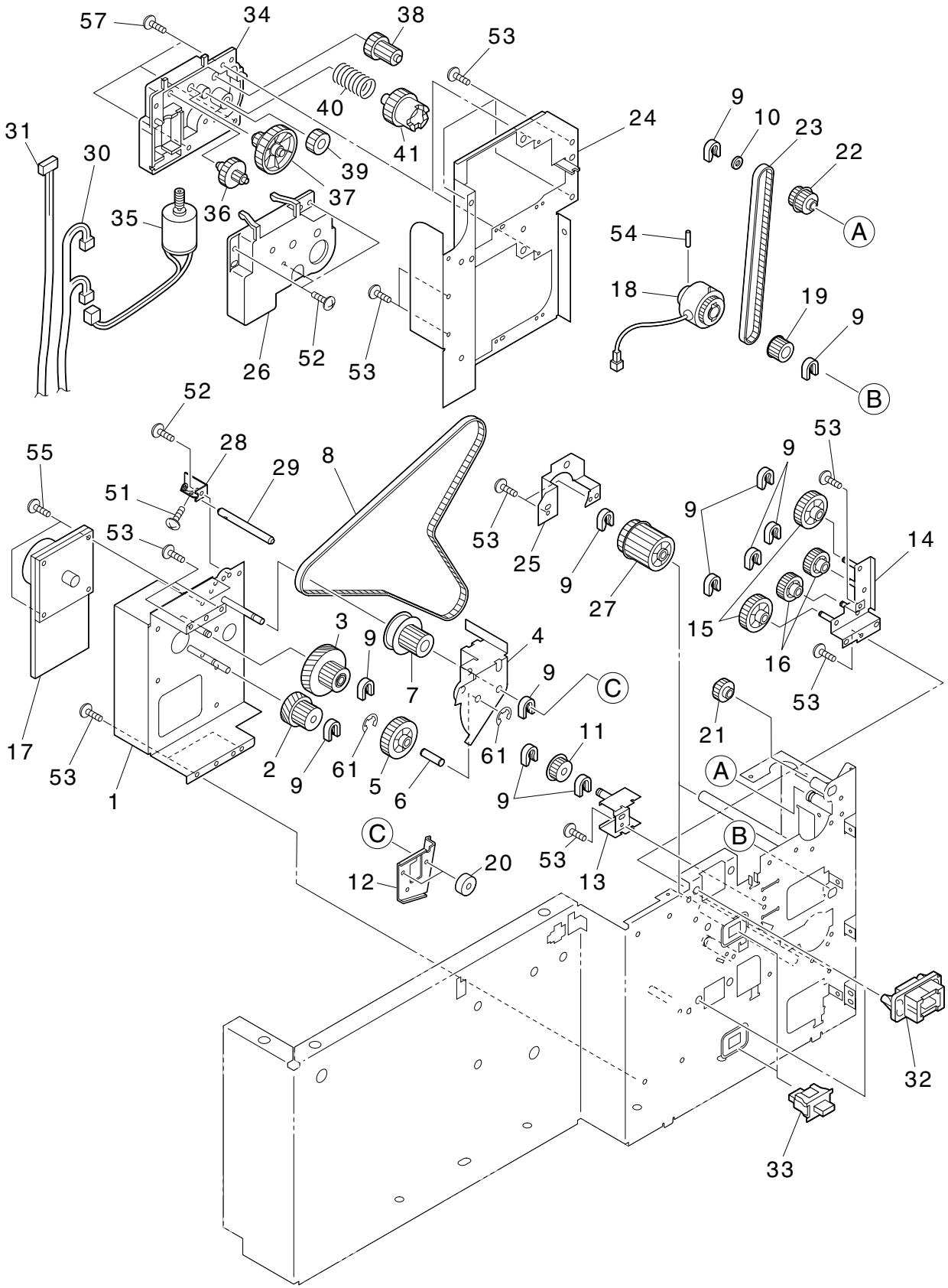
ASM-COVER	1
ASM-FRAME	2
ASM-DRIVE	3
ASM-FEED-1	4
ASM-FEED-2	5
ASM-CASSETTE	6
PWA-PFP	7
OPTION	8

PARTS NUMBER INDEX

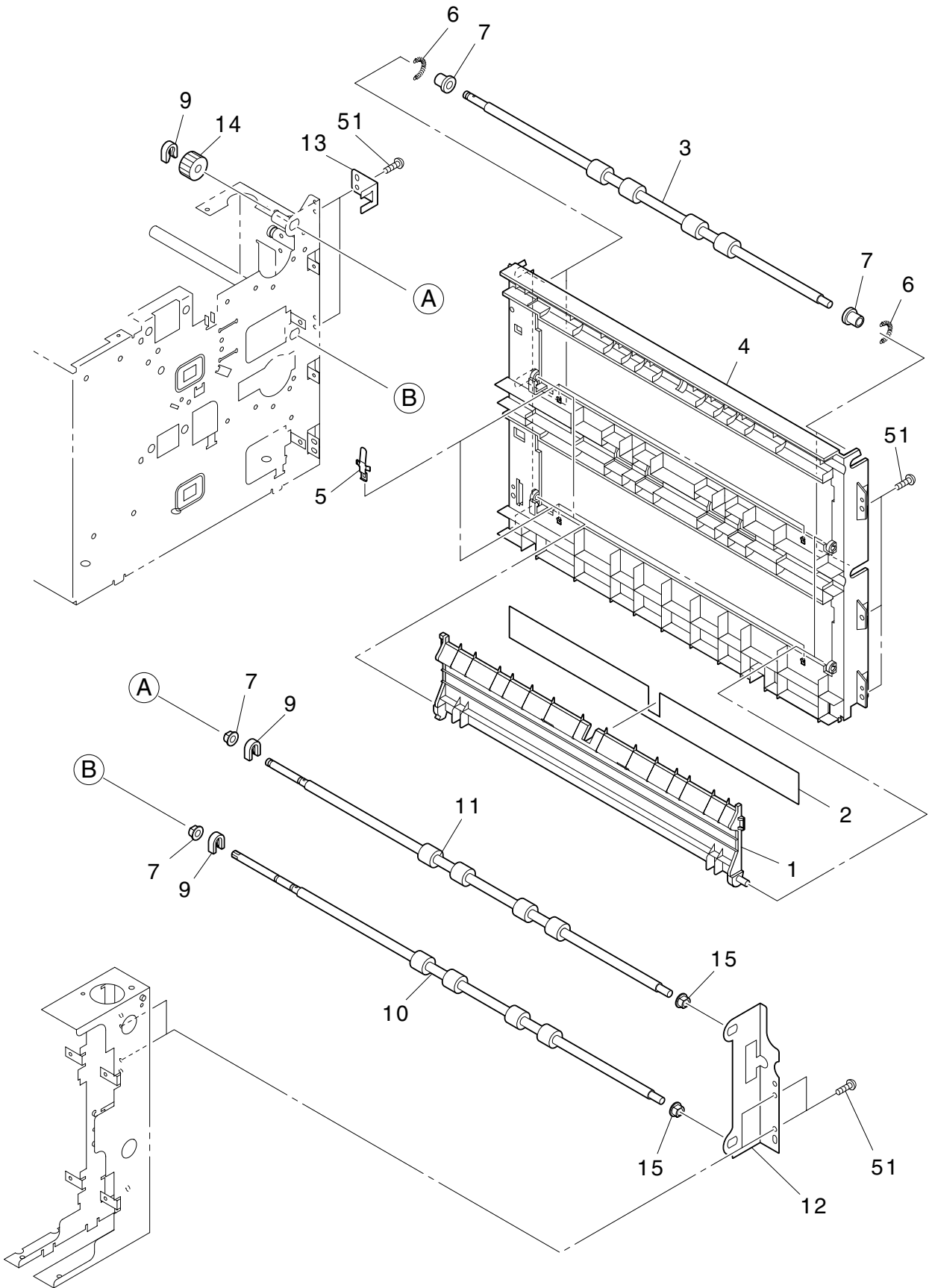


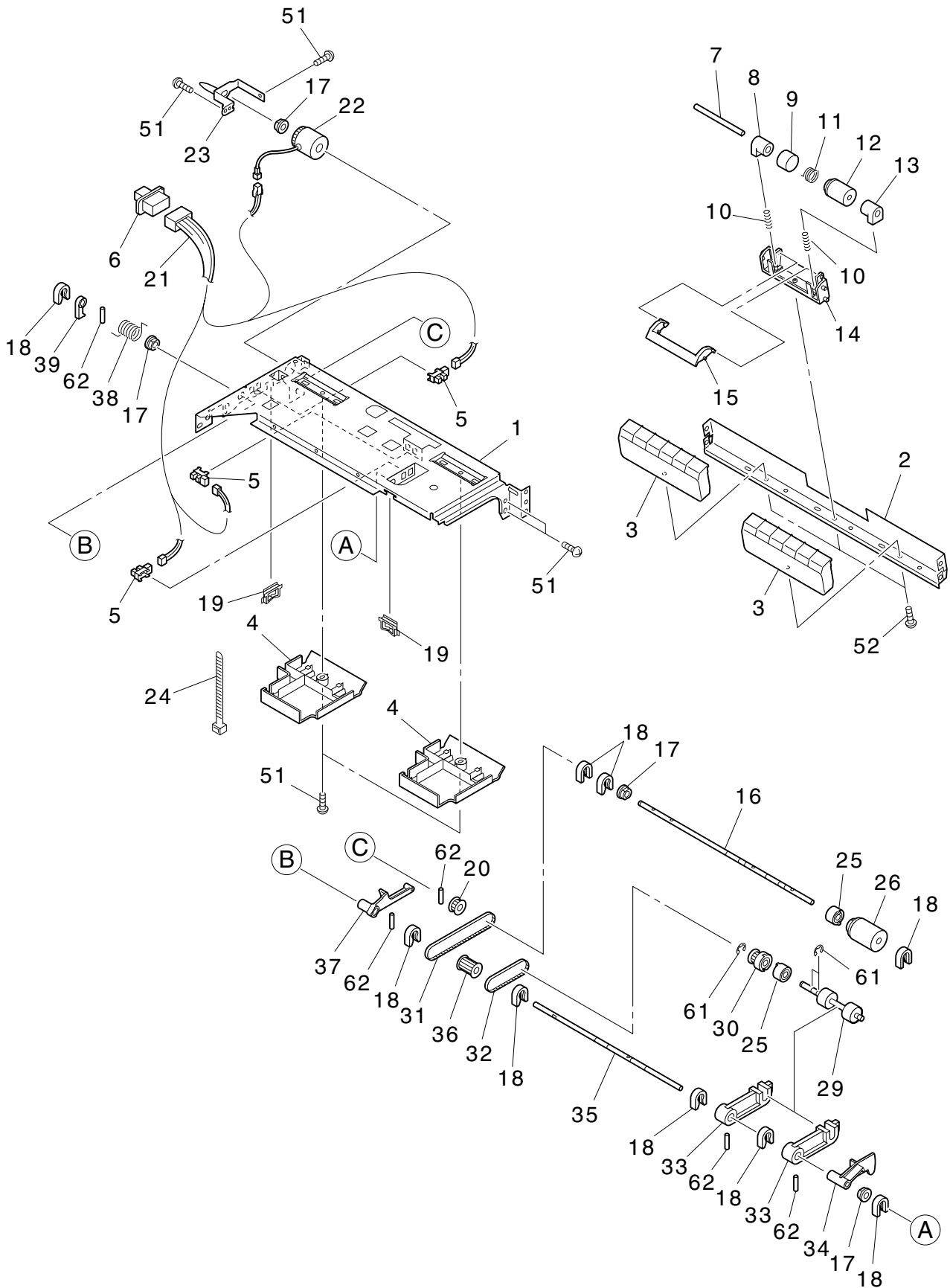
ITEM NO.	PARTS NO.	PARTS NAME	Q'TY / PAGE	Q'TY / PACK	PIR	BSI NO.	TO	FROM	SERIAL NO.	REMARKS	C
1	41319178000	COV-REAR-CON	1	1	PP						
2	41319177000	COVER-REAR	1	1	PP						
3	41319172000	COVER-R-R	1	1	PP						
4	41319081000	COVER-PAP-GUIDE	1	1	PP						
5	41319171000	COVER-R-F	1	1	PP						
6	41319173000	COVER-R-LOW	1	1	PP						
7	41319134000	COVER-FRONT	1	1	PP						
8	41319135000	COVER-CTR-DUMY	1	1	PP						
9	41319140000	COVER-F-SKIRT	1	1	PP						
10	41319141000	COVER-CTR-LOW	1	1	PP						
11	41319146000	COV-LEFT-PFP	1	1	PP						
12	41319147000	COVER-L-DSGN	1	1	PP						
13	41319160000	PLT-FOOT-LOCK	1	1	P						
14	41319083000	KNOB-COVER	1	1	P						
15	41319082000	SHAFT-HOOK	1	1	P						
16	41319085000	HOOK-COVER	2	1	P						
17	41319007000	SPE-HOOK	1	5	P						
18	41319080000	SZ-FED-PFP25	2	1	C						
19	41319253000	WH-PFP-FED-CV	1	1	P						
20	41319101000	COVER-P-SENSOR	2	1	PP						
21	4402859600	SP-CS3A-B2BA	1	1	D						
22	41319100000	COVER-D-SENSOR	1	1	PP						
23	41319086000	COVER-WIRING	3	1	P						
24	41319175000	STOPPER-STRING	1	5	P						
25	41319252000	WH-PFP-CV	1	1	P						
26	41318655000	BRKT-JOINT-P-F	2	1	P						
27	41318656000	BRKT-JOINT-P-R	2	1	P						
28	41319031000	LBL-HIGH-LOW	1	5	P						
51	4842040846	PTBR30*08MSZN3A	2	50	P						
52	4842041807	TBIDS-30*06-3C	1	7	50/P						
53	4842041799	SCREW-MR-M3-6	2	50	P						
54	4842040370	TBID3006MSZN3L	3	50	P						
55	4842040692	TZPAN3008MSZN3L	5	50	P						
56	4842080161	ZPANS30*06ZN3A	1	50	P						
61	4842090311	ERR040SKZN3A	2	50	P						



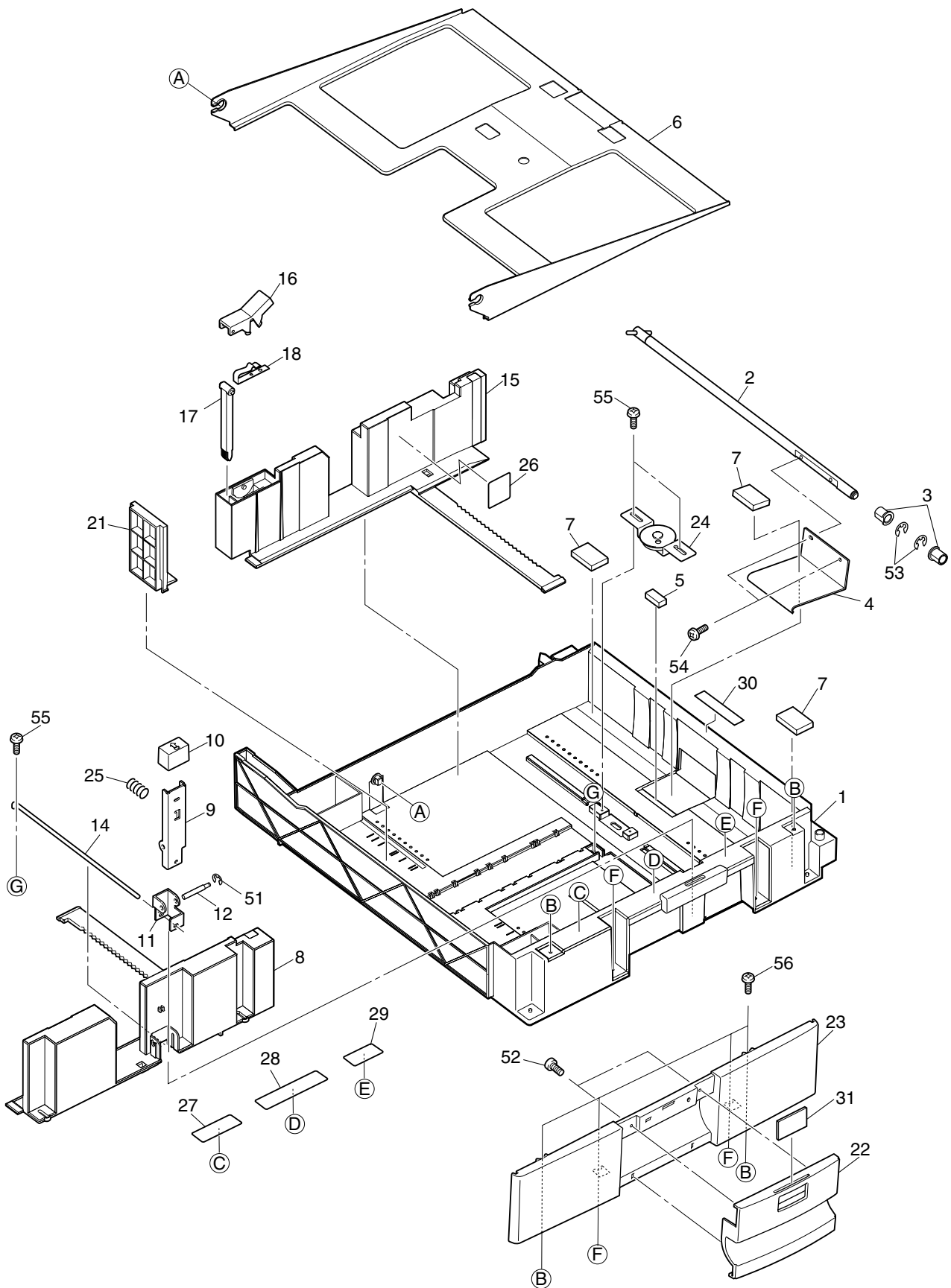


ITEM NO.	PARTS NO.	PARTS NAME	Q'TY / PAGE	Q'TY / PACK	PIR	BSI NO.	TO	FROM	SERIAL NO.	REMARKS	C
1	41319039000	K-BRKT-MOTOR	1	1/P							
2	41319043000	GG10S018/05H048	1	1/P							
3	41319044000	GG10S018/05H073	1	1/P							
4	41319049000	BRKT-SHIFT-LVR	1	1/P							
5	41319051000	GEAR-10S031-06	1	1/P							
6	41319052000	SFT-SHIFT-185	1	1/P							
7	41319023000	GP10S018/3GT031	1	1/P							
8	41319024000	BLT/T-480-3GT-6	1	1/P							
9	4407972860	STOP-RING-6-5	12	5/P							
10	41319076000	HWAS-PFP-SUS	1	10/P							
11	41319059000	PLY-TENSION	1	1/P							
12	41319042000	BRKT-MTR-SUP	1	1/P							
13	41319056000	K-BRKT-TENS-1	1	1/P							
14	41319028000	K-BRKT-IDL-GEAR	1	1/P							
15	41319033000	GEAR-10S028-06	2	1/P							
16	41319034000	GEAR-10S020-06	2	1/P							
17	4400678600	M/DC-MAIN-140	1	1/C							
18	41319119000	ASM-CLT-10K-22	1	1/D							
19	41319156000	K-PLY-2GT027	1	1/P							
20	41319410000	WAS-MTR	2	10/P							
21	41319071000	GEAR-10S016-06	1	1/P							
22	41319072000	GP10S016/2GT027	1	1/P							
23	41319168000	BLT/T-202-2GT-6	1	1/P							
24	41319161000	BRKT-GEAR-BOX	1	1/P							
25	41319070000	BRKT-FED-LOC	2	1/P							
26	41306027000	CASE-TRY-DEV-F	2	1/P							
27	41319074000	GP10S028/3GT031	2	1/P							
28	41319176000	BRKT-KNOB-PIN	1	1/P							
29	41319174000	SFT-LEVER	1	1/P							
30	41319251000	WH-PFP-TM-MM	1	1/P							
31	41319254000	WH-PFP-FEDUNT	1	1/P							
32	4843309863	J-55533-1211	2	5/P							
33	4843232255	SP-CS1A-B2CA	2	1/D							
34	41306026000	CASE-TRY-DEV-R	2	1/P							
35	41306513000	M/DC-TRAY-CST	2	1/C							
36	4401966040	G05H-45/G05S-15	2	1/P							
37	41306023000	GER-TRAY-80-13	2	1/P							
38	41306024000	GER-TRAY-24-14	2	1/P							
39	41306025000	GER-TRAY-21	2	1/P							
40	41305502000	SPC-CPG-LIFT	2	1/P							
41	41306022000	CPG-LIFT-28	2	1/P							
51	4842080161	ZPANS30*06ZN3A	1	50/P							
52	4842040846	PTBR30*08MSZN3A	6	50/P							
53	4842040370	TBID3006MSZN3L	16	50/P							
54	4842011062	9HSS30/04MSFB	2	50/P							
55	4842041714	TPANS-30*10-3L	2	50/P							
57	4842040694	TZPAN3010MSZN3L	6	50/P							
61	4842090312	ERR050SKZN3A	2	50/P							

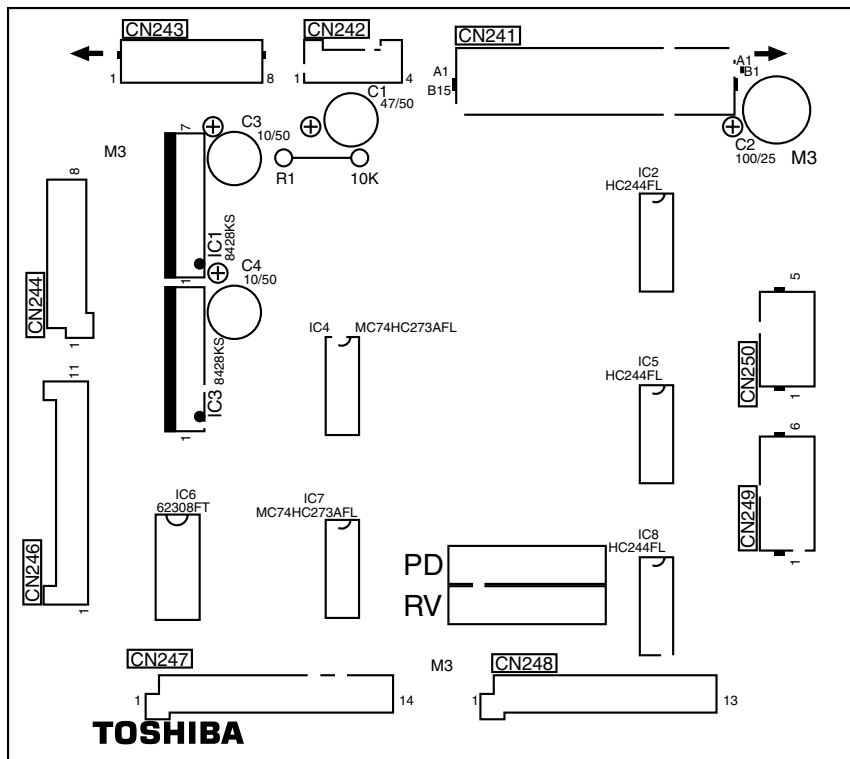




ITEM NO.	PARTS NO.	PARTS NAME	Q'TY / PAGE	Q'TY / PACK	PIR	BSI NO.	TO	FROM	SERIAL NO.	REMARKS	C
1	41318608000	K-BKT-FEED-UNIT	1	1/P							
2	41318614000	BRKT-ROL-SEP	1	1/P							
3	41318623000	GUIDE-P-SEP	2	1/P							
4	41318610000	GUIDE-P-FEED	2	1/P							
5	4408683480	SZ-GP1A73A	3	1/C							
6	4843309862	J-54702-1211	1	5/P							
7	41304506000	SFT-SEP-AT	1	1/P							
8	4401964270	ARBOR-SPT-R	1	1/P							
9	4400683950	COVER-SPE/ARBOR	1	1/P							
10	4401966920	SPC054-050-1500	2	5/P							
11	4401784210	SPR-1.0-15-6ORF	1	5/P							
12	4401964290	K-ROLL-SPT	1	1/P							MSP
13	4401964360	ARBOR-SPT-F	1	1/P							
14	41318618000	HOLDER-SEP-ROL	1	1/P							
15	41318621000	LEVER-RLR-SEP	1	1/P							
16	41304508000	SFT-ROL-FEED	1	1/P							
17	44201492000	BUSH-6-POM	4	5/P							
18	4407972860	STOP-RING-6-5	9	5/P							
19	4843391367	BD/W-EDS-0607M	2	5/P							
20	4400884670	PLY-20-ROL	1	1/P							
21	41318751000	WH-FED-UNT	1	1/P							
22	4401969940	ASM-CLT-G28-CC6	1	1/C							
23	41318605000	K-BRKT-CLT	1	1/P							
24	4407527950	SKB-1M	5	5/P							
25	4402833110	CLUTCH-6-L	2	1/P							
26	4401964410	K-ROLL-FEED	1	1/P							MSP
29	41306719000	ROLLER-PICK-AT	1	1/P							MSP
30	4402231780	PLY-20-2M	1	1/P							
31	41306504000	BLT/T-194-2GT-2	1	1/P							
32	41306502000	BLT/T-124-2GT-2	1	1/P							
33	41306011000	ARM-RLR-PICK	2	1/P							
34	41306012000	ACTR-EMPTY-PPR	1	1/P							
35	41318604000	SFT-DRV-PICK	1	1/P							
36	41306002000	PLY/T-PICK-20	1	1/P							
37	41318603000	ARM-FEED-UNIT	1	1/P							
38	41305501000	SPR-LVR-PICK	1	1/P							
39	41306005000	LEVER-RLR-PICK	1	1/P							
51	4842040370	TBID3006MSZN3L	8	50/P							
52	4842040846	PTBR30*08MSZN3A	3	50/P							
61	4842090312	ERR050SKZN3A	3	50/P							
62	4842904019	HPIN20/08SUSH7	5	50/P							



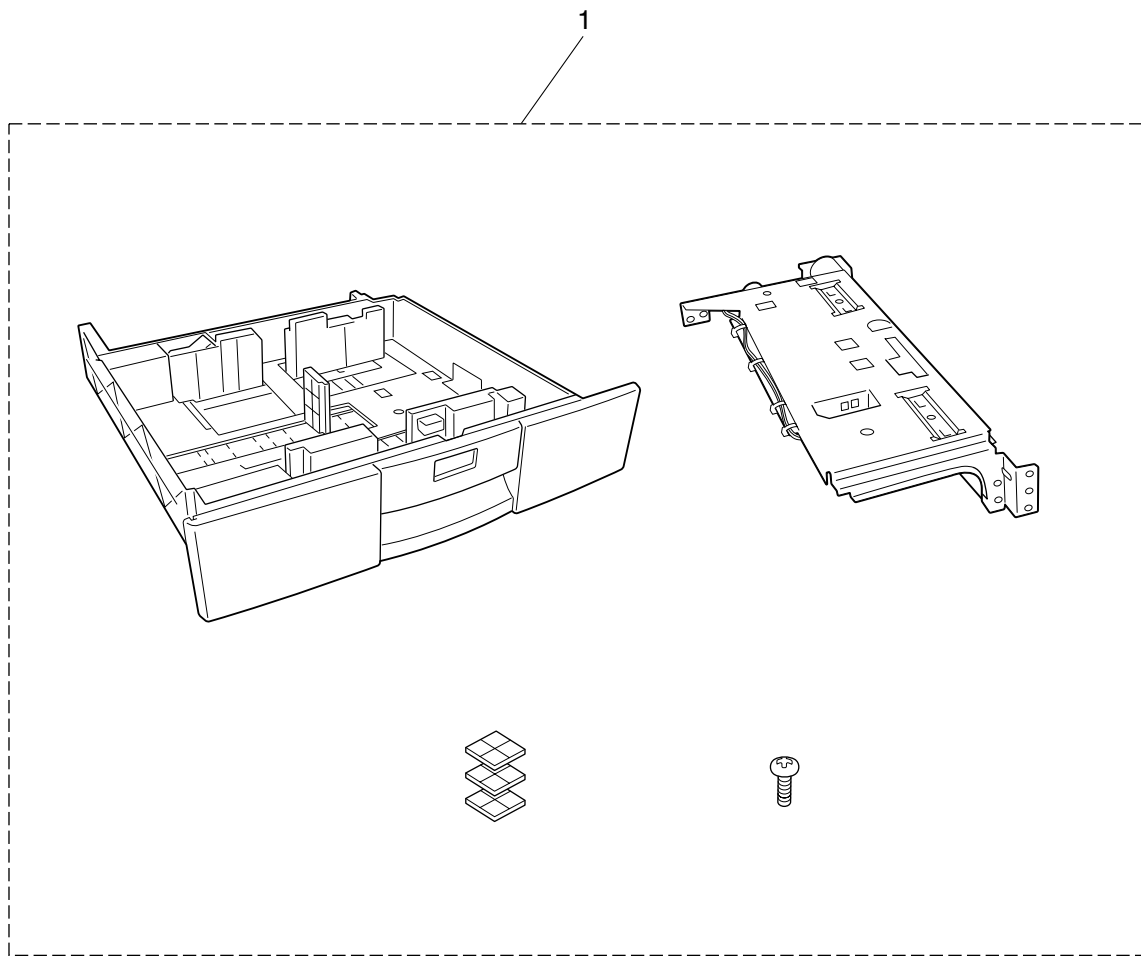
ITEM NO.	PARTS NO.	PARTS NAME	Q'TY / PAGE	Q'TY / PACK	PIR	BSI NO.	TO	FROM	SERIAL NO.	REMARKS	C
1	41304067000	K-CST-AT	1	1/PP							
2	41304004000	K-SFT-LIFT-TRAY	1	1/P							
3	41306028000	BUSH-SFT-LIFT	2	5/P							
4	41305014000	LVR-LIFT-TRAY	1	1/P							
5	41306614000	CUSH-LVR-LIFT	1	5/P							
6	41304006000	K-TRAY-CST-AT	1	1/PP							
7	41306517000	CUSH-TRAY-CST	3	1/P							
8	41306033000	WALL-SIDE-F-AT	1	1/KP							
9	41305015000	LVR-ADJUST-WALL	1	1/P							
10	41306030000	LID-LVR-ADJUST	1	1/P							
11	41305012000	PL-ADJUST-WALL	1	1/P							
12	41304510000	PIN-ADJUST-LVR	1	1/P							
14	41304511000	PIN-ADJUST-WALL	1	1/P							
15	41304065000	K-WALL-SIDE-R	1	1/PP							
16	41306261000	LVR-LOC-WALL-R	1	1/P							
17	41306260000	LOCK-WALL-R	1	1/P							
18	41305546000	SPL-LOCK-WALL-R	1	1/P							
21	41306031000	WALL-END-AT	1	1/P							
22	41306183000	COV-CST	1	1/PP							
23	41306184000	HANDLE-CST	1	1/PP							
24	41304005000	K-PL-PINION-TRY	1	1/P							
25	41305503000	SPC-LVR-WALL	1	1/P							
26	41306694000	LBL/O-P-MAX	1	5/P							
27	41306692000	LBL/O-PAPER	1	5/P							
28	41306698000	LBL/O-GUIDE	1	1/KP							
29	41306696000	LBL/O-LD	1	5/P							
30	41306917000	SHEET-CST	1	1/KP							
31A	41306705000	SHEET-CST	1	1/KP						A4 Series	
31B	41306706000	SHEET-CST-US	1	1/KP						LT Series	
51	4842090308	ERRO20SKZN3A	1	50/P							
52	4842042077	TBIDP3008MSZN3A	2	50/P							
53	4842090314	ERRO70SKZN3A	2	50/P							
54	4842040685	TBID3008MSZN3A	2	50/P							
55	4842040846	PTBR30*08MSZN3A	3	50/P							
56	4842042073	TZPAN-M3*08P-3A	4	50/P							



ITEM NO.	PARTS NO.	PARTS NAME	Q'TY / PAGE	Q'TY / PACK	P	I	R	BSI NO.	TO	FROM	SERIAL NO.	REMARKS	C
0	41319205000	PWA-F-PFP-519-3	1	1/SB									
1	3040378538	IC-TA8428K (S)	1	1/S									
2	4843112454	IC1 IC-MC74HC244FL	1	5/S									
3	3040378538	IC2 IC-TA8428K (S)	1	1/S									
4	4843116255	IC3 IC-MC74HC273AFL	1	1/S									
5	4843112454	IC4 IC-MC74HC244FL	1	5/S									
6	3040274687	IC5 IC-TD62308FTP2	1	1/S									
7	4843116255	IC6 IC-MC74HC273AFL	1	1/S									
8	4843112454	IC7 IC-MC74HC244FL	1	5/S									
21	4843413758	IC8 CE-04WQ1H476MB	1	10/P									
22	4843413749	C1 CE-04WQ1E107MB	1	10/P									
23	4843413736	C2 CE-04WG1H106MB	1	10/P									
24	4843413736	C3 CE-04WG1H106MB	1	10/P									
25	4843410862	C4 CTP-K1F1E104ZT	1	10/P									
26	4843412139	C5 CTP-M1F1H104ZT	1	10/P									
27	4843412139	C6 CTP-M1F1H104ZT	1	10/P									
28	4843412139	C7 CTP-M1F1H104ZT	1	10/P									
29	4843410725	C8 CTP-M1B1H222KT	1	10/P									
30	4843410721	C9 CTP-M1B1H102KT	1	10/P									
31	4843410721	C10 CTP-M1B1H102KT	1	10/P									
32	4843410862	C11 CTP-K1F1E104ZT	1	10/P									
33	4843410862	C12 CTP-K1F1E104ZT	1	10/P									
34	4843410862	C13 CTP-K1F1E104ZT	1	10/P									
35	4843410862	C14 CTP-K1F1E104ZT	1	10/P									
36	4843410862	C15 CTP-K1F1E104ZT	1	10/P									
37	4843410862	C16 CTP-K1F1E104ZT	1	10/P									
38	4843412139	C17 CTP-M1F1H104ZT	1	10/P									
101	4843077095	C18 RD-Z2HL103JBF	1	10/P									
102	4843072175	R1 RTP-2B2A223JDT	1	10/P									
103	4843072167	R2 RTP-2B2A472JDT	1	10/P									
104	4843072167	R3 RTP-2B2A472JDT	1	10/P									
105	4843072175	R4 RTP-2B2A223JDT	1	10/P									
106	4843072175	R5 RTP-2B2A223JDT	1	10/P									
107	4843072167	R6 RTP-2B2A472JDT	1	10/P									
108	4843072167	R7 RTP-2B2A472JDT	1	10/P									
109	4843072175	R8 RTP-2B2A223JDT	1	10/P									

ITEM NO.	PARTS NO.	PARTS NAME	Q'TY / PAGE	Q'TY / PACK	PIR	BSI NO.	TO	FROM	SERIAL NO.	REMARKS	C
110	4843072175	R9 RTP-2B2A223JDT	1	10/P							
111	4843072167	R10 RTP-2B2A472JDT	1	10/P							
112	4843072167	R11 RTP-2B2A472JDT	1	10/P							
113	4843072175	R12 RTP-2B2A223JDT	1	10/P							
114	4843072175	R13 RTP-2B2A223JDT	1	10/P							
115	4843072167	R14 RTP-2B2A472JDT	1	10/P							
116	4843072167	R15 RTP-2B2A472JDT	1	10/P							
117	4843072175	R16 RTP-2B2A223JDT	1	10/P							
118	4843072167	R17 RTP-2B2A472JDT	1	10/P							
119	4843072167	R18 RTP-2B2A472JDT	1	10/P							
120	4843072167	R19 RTP-2B2A472JDT	1	10/P							
121	4843072167	R20 RTP-2B2A472JDT	1	10/P							
122	4843072167	R21 RTP-2B2A472JDT	1	10/P							
123	4843072175	R22 RTP-2B2A223JDT	1	10/P							
124	4843072167	R23 RTP-2B2A472JDT	1	10/P							
125	4843072167	R24 RTP-2B2A472JDT	1	10/P							
126	4843072167	R25 RTP-2B2A472JDT	1	10/P							
127	4843072167	R26 RTP-2B2A472JDT	1	10/P							
128	4843072175	R27 RTP-2B2A223JDT	1	10/P							
129	4843072175	R28 RTP-2B2A223JDT	1	10/P							
130	4843072167	R29 RTP-2B2A472JDT	1	10/P							
131	4843072167	R30 RTP-2B2A472JDT	1	10/P							
132	4843072167	R31 RTP-2B2A472JDT	1	10/P							
133	4843072167	R32 RTP-2B2A472JDT	1	10/P							
134	4843072175	R33 RTP-2B2A223JDT	1	10/P							
135	4843072167	R34 RTP-2B2A472JDT	1	10/P							
136	4843072154	R35 RTP-2B2A391JDT	1	10/P							
137	4843072167	R36 RTP-2B2A472JDT	1	10/P							
138	4843072175	R37 RTP-2B2A223JDT	1	10/P							
139	4843072175	R38 RTP-2B2A223JDT	1	10/P							
140	4843072167	R39 RTP-2B2A472JDT	1	10/P							
141	4843072167	R40 RTP-2B2A472JDT	1	10/P							
142	4843072175	R41 RTP-2B2A223JDT	1	10/P							
144	4843072167	R42 RTP-2B2A472JDT	1	10/P							
		R44									

ITEM NO.	PARTS NO.	PARTS NAME	Q'TY / PAGE	Q'TY / PACK	PIR	BSI NO.	TO	FROM	SERIAL NO.	REMARKS	C
145	4843072167	RTP-2B2A472JDT R45	1	10/P							
146	4843072175	RTP-2B2A223JDT R46	1	10/P							
147	4843072167	RTP-2B2A472JDT R47	1	10/P							
148	4843072167	RTP-2B2A472JDT R48	1	10/P							
149	4843072167	RTP-2B2A472JDT R49	1	10/P							
150	4843072175	RTP-2B2A223JDT R50	1	10/P							
151	4843072167	RTP-2B2A472JDT R51	1	10/P							
152	4843072154	RTP-2B2A391JDT R52	1	10/P							
153	4843072167	RTP-2B2A472JDT R53	1	10/P							
154	4843072167	RTP-2B2A472JDT R54	1	10/P							
155	4843072167	RTP-2B2A472JDT R55	1	10/P							
156	4843072175	RTP-2B2A223JDT R56	1	10/P							
157	4843072167	RTP-2B2A472JDT R57	1	10/P							
158	4843072167	RTP-2B2A472JDT R58	1	10/P							
159	4843072175	RTP-2B2A223JDT R59	1	10/P							
201	4843307787	J-53313-3015 CN241	1	5/P							
202	4843304944	J-53052-0410 CN242	1	5/P							
203	4843306196	J-0-175487-8 CN243	1	5/P							
204	4843307997	J-53324-0810 CN244	1	5/P							
206	4843304937	J-53052-1110 CN246	1	5/P							
207	4843308003	J-53324-1410 CN247	1	5/P							
208	4843308002	J-53324-1310 CN248	1	5/P							



PARTS NO.	PARTS NAME	Q'TY / PAGE	Q'TY / PACK	PAGE	ITEM NO.	PIR	B S I NO.	SERIAL NO.	REMARKS	LOCATION	C
3040274687	IC-TD62308FTP2	11/S	7	6						IC6	
3040378538	IC-TA8428K(S)	11/S	7	1						IC1	
		11/S	7	3						IC3	
41304004000	K-SFT-LIFT-TRAY	11/P	6	2							
41304005000	K-PL-PINION-TRY	11/P	6	24							
41304006000	K-TRAY-CST-AT	11/PP	6	6							
41304065000	K-WALL-SIDE-R	11/PP	6	15							
41304067000	K-CST-AT	11/PP	6	1							
41304506000	SFT-SEP-AT	11/P	5	7							
41304508000	SFT-ROL-FEED	11/P	5	16							
41304510000	PIN-ADJUST-LVR	11/P	6	12							
41304511000	PIN-ADJUST-WALL	11/P	6	14							
41305012000	PL-ADJUST-WALL	11/P	6	11							
41305014000	LVR-LIFT-TRAY	11/P	6	4							
41305015000	LVR-ADJUST-WALL	11/P	6	9							
41305501000	SPR-LVR-PICK	11/P	5	38							
41305502000	SPC-CPG-LIFT	21/P	3	40							
41305503000	SPC-LVR-WALL	11/P	6	25							
41305546000	SPL-LOCK-WALL-R	11/P	6	18							
41306002000	PLY/T-PICK-20	11/P	5	36							
41306005000	LEVER-RLR-PICK	11/P	5	39							
41306007000	SLIDER-CST	61/P	2	14							
41306008000	CATCH-CST	21/P	2	9							
41306011000	ARM-RLR-PICK	21/P	5	33							
41306012000	ACTR-EMPTY-PPR	11/P	5	34							
41306022000	CPG-LIFT-28	21/P	3	41							
41306023000	GER-TRAY-80-13	21/P	3	37							
41306024000	GER-TRAY-24-14	21/P	3	38							
41306025000	GER-TRAY-21	21/P	3	39							
41306026000	CASE-TRY-DEV-R	21/P	3	34							
41306027000	CASE-TRY-DEV-F	21/P	3	26							
41306028000	BUSH-SFT-LIFT	25/P	6	3							
41306030000	LID-LVR-ADJUST	11/P	6	10							
41306031000	WALL-END-AT	11/P	6	21							
41306033000	WALL-SIDE-F-AT	11/KP	6	8							
41306183000	COV-CST	11/PP	6	22							
41306184000	HANDLE-CST	11/PP	6	23							
41306260000	LOCK-WALL-R	11/P	6	17							
41306261000	LVR-LOC-WALL-R	11/P	6	16							
41306502000	BLT/T-124-2GT-2	11/P	5	32							
41306504000	BLT/T-194-2GT-2	11/P	5	31							
41306513000	M/DC-TRAY-CST	21/C	3	35							
41306517000	CUSH-TRAY-CST	31/P	6	7							
41306614000	CUSH-LVR-LIFT	15/P	6	5							
41306692000	LBL/O-PAPER	15/P	6	27							
41306694000	LBL/O-P-MAX	15/P	6	26							
41306696000	LBL/O-LD	15/P	6	29							
41306698000	LBL/O-GUIDE	11/KP	6	28							
41306705000	SHEET-CST	11/KP	6	31A					A4 Series		
41306706000	SHEET-CST-US	11/KP	6	31B					LT Series		
41306719000	ROLLER-PICK-AT	11/P	5	29							
41306917000	SHEET-CST	11/KP	6	30							MSP
41318603000	ARM-FEED-UNIT	11/P	5	37							
41318604000	SFT-DRV-PICK	11/P	5	35							
41318605000	K-BRKT-CLT	11/P	5	23							
41318608000	K-BKT-FEED-UNIT	11/P	5	1							
41318610000	GUIDE-P-FEED	21/P	5	4							
41318614000	BRKT-ROL-SEP	11/P	5	2							
41318618000	HOLDER-SEP-ROL	11/P	5	14							
41318621000	LEVER-RLR-SEP	11/P	5	15							
41318623000	GUIDE-P-SEP	21/P	5	3							
41318655000	BRKT-JOINT-P-F	21/P	1	26							
41318656000	BRKT-JOINT-P-R	21/P	1	27							
41318751000	WH-FED-UNT	11/P	5	21							
41319007000	SPE-HOOK	15/P	1	17							
41319023000	GP10S018/3GT031	11/P	3	7							
41319024000	BLT/T-480-3GT-6	11/P	3	8							
41319028000	K-BRKT-IDL-GEAR	11/P	3	14							
41319031000	LBL-HIGH-LOW	15/P	1	28							
41319033000	GEAR-10S028-06	21/P	3	15							

PARTS NO.	PARTS NAME	Q'TY / PAGE	Q'TY / PACK	PAGE	ITEM NO.	PIR	B S I NO.	SERIAL NO.	REMARKS	LOCATION	C
41319034000	GEAR-10S020-06	21/P		3	16						
41319039000	K-BRKT-MOTOR	11/P		3	1						
41319042000	BRKT-MTR-SUP	11/P		3	12						
41319043000	GG10S018/05H048	11/P		3	2						
41319044000	GG10S018/05H073	11/P		3	3						
41319049000	BRKT-SHIFT-LVR	11/P		3	4						
41319051000	GEAR-10S031-06	11/P		3	5						
41319052000	SFT-SHIFT-185	11/P		3	6						
41319056000	K-BRKT-TENS-1	11/P		3	13						
41319059000	PLY-TENSION	11/P		3	11						
41319069000	BRKT-GRD	21/P		4	13						
41319070000	BRKT-FED-LOC	21/P		3	25						
41319071000	GEAR-10S016-06	11/P		3	21						
41319072000	GP10S016/2GT027	11/P		3	22						
41319074000	GP10S028/3GT031	21/P		3	27						
41319076000	HWAS-PFP-SUS	110/P		3	10						
41319080000	SZ-FED-PFP25	21/C		1	18						
41319081000	COVER-PAP-GUIDE	11/PP		1	4						
41319082000	SHAFT-HOOK	11/P		1	15						
41319083000	KNOB-COVER	11/P		1	14						
41319085000	HOOK-COVER	21/P		1	16						
41319086000	COVER-WIRING	31/P		1	23						
41319092000	K-GUIDE-PAPER2	21/KP		4	1						
41319093000	GUIDE-PAPER1	11/P		4	4						
41319095000	SHEET-PAP-GUIDE	21/KP		4	2						
41319096000	ROL-TR-P	21/KP		4	3						
41319098000	SPL-GUIDE-LOC	41/P		4	5						
41319100000	COVER-D-SENSOR	11/PP		1	22						
41319101000	COVER-P-SENSOR	21/PP		1	20						
41319102000	SPRING-ROLLER	45/P		4	6						
41319107000	BRKT-HANDRING	41/P		2	10						
41319110000	K-BRKT-ADJ	41/P		2	11						
41319116000	FOOT-PFP	41/P		2	12						
41319117000	CASTER-DM25	41/P		2	13						
41319119000	ASM-CLT-10K-22	11/D		3	18						
41319134000	COVER-FRONT	11/PP		1	7						
41319135000	COVER-CTR-DUMY	11/PP		1	8						
41319140000	COVER-F-SKIRT	11/PP		1	9						
41319141000	COVER-CTR-LOW	11/PP		1	10						
41319146000	COV-LEFT-PFP	11/PP		1	11						
41319147000	COVER-L-DSGN	11/PP		1	12						
41319150000	ROL-TR-1	11/P		4	10						
41319153000	ROL-TR-2	11/P		4	11						
41319156000	K-PLY-2GT027	11/P		3	19						
41319157000	K-GEAR-10S16-06	11/P		4	14						
41319158000	STAY-TOP-R	11/P		2	6						
41319159000	STAY-TOP-F	11/P		2	8						
41319160000	PLT-FOOT-LOCK	11/P		1	13						
41319161000	BRKT-GEAR-BOX	11/P		3	24						
41319162000	STAY-TOP-SUP	11/P		2	7						
41319163000	PLT-SPACER	21/P		2	15						
41319164000	RAIL-CASSETTE	21/P		2	5						
41319165000	BRKT-ROLLER	11/P		4	12						
41319167000	PIN-LOCAT-PFP	25/P		2	16						
41319168000	BLT/T-202-2GT-6	11/P		3	23						
41319169000	STUD-280	21/P		2	21						
41319171000	COVER-R-F	11/PP		1	5						
41319172000	COVER-R-R	11/PP		1	3						
41319173000	COVER-R-LOW	11/PP		1	6						
41319174000	SFT-LEVER	11/P		3	29						
41319175000	STOPPER-STRING	15/P		1	24						
41319176000	BRKT-KNOB-PIN	11/P		3	28						
41319177000	COVER-REAR	11/PP		1	2						
41319178000	COV-REAR-CON	11/PP		1	1						
41319205000	PWA-F-PFP-519-3	11/SB		2	25						
		11/SB		7	0						
41319251000	WH-PFP-TM-MM	11/P		3	30						
41319252000	WH-PFP-CV	11/P		1	25						
41319253000	WH-PFP-FED-CV	11/P		1	19						
41319254000	WH-PFP-FEDUNT	11/P		3	31						

PARTS NO.	PARTS NAME	Q'TY	Q'TY	PAGE	ITEM NO.	PIR	BSI NO.	SERIAL NO.	REMARKS	LOCATION	C
		PAGE	PACK								
41319255000	WH-PFC-PFP-2	1	1/P	2	27						
41319410000	WAS-MTR	2	10/P	3	20						
4400678600	M/DC-MAIN-140	1	1/C	3	17						
4400683950	COVER-SPE/ARBOR	1	1/P	5	9						
4400884670	PLY-20-ROL	1	1/P	5	20						
4401784210	SPR-1.0-15-6ORF	1	5/P	5	11						
4401964270	ARBOR-SPT-R	1	1/P	5	8						
4401964290	K-ROLL-SPT	1	1/P	5	12						MSP
4401964360	ARBOR-SPT-F	1	1/P	5	13						
4401964410	K-ROLL-FEED	1	1/P	5	26						MSP
4401966040	G05H-45/G05S-15	2	1/P	3	36						
4401966920	SPC054-050-1500	2	5/P	5	10						
4401969940	ASM-CLT-G28-CC6	1	1/C	5	22						
4402231780	PLY-20-2M	1	1/P	5	30						
4402833110	CLUTCH-6-L	2	1/P	5	25						
4402859600	SP-CS3A-B2BA	1	1/D	1	21						
4407527950	SKB-1M	5	5/P	5	24						
4407972860	STOP-RING-6-5	1	25/P	3	9						
			35/P	4	9						
			95/P	5	18						
4407976990	BUSH-D6-GCB	6	1/P	4	7						
4408683480	SZ-GP1A73A	3	1/C	5	5						
44201492000	BUSH-6-POM	2	5/P	4	15						
			45/P	5	17						
4842011062	9HSS30/04MSFB	2	50/P	3	54						
4842040060	TPAN40*08MSZN3L	1	250/P	2	52						
4842040370	TBID3006MSZN3L	3	50/P	1	54						
			2650/P	2	51						
			1650/P	3	53						
			1050/P	4	51						
			850/P	5	51						
4842040685	TBID3008MSZN3A	2	50/P	6	54						
4842040692	TZPAN3008MSZN3L	5	50/P	1	55						
			250/P	2	56						
4842040694	TZPAN3010MSZN3L	6	50/P	3	57						
4842040846	PTBR30*08MSZN3A	2	50/P	1	51						
			450/P	2	55						
			650/P	3	52						
			350/P	5	52						
			350/P	6	55						
4842041714	TPANS-30*10-3L	2	50/P	3	55						
4842041799	SCREW-MR-M3-6	2	50/P	1	53						
4842041807	TBIDS-30*06-3C	1	1750/P	1	52						
4842042073	TZPAN-M3*08P-3A	4	50/P	6	56						
4842042077	TBIDP3008MSZN3A	2	50/P	6	52						
4842080161	ZPANS30*06ZN3A	1	150/P	1	56						
			250/P	2	54						
			150/P	3	51						
4842090308	ERR020SKZN3A	1	150/P	6	51						
4842090311	ERR040SKZN3A	2	50/P	1	61						
4842090312	ERR050SKZN3A	2	50/P	3	61						
			350/P	5	61						
4842090314	ERR070SKZN3A	2	50/P	6	53						
4842904019	HPIN20/08SUSH7	5	50/P	5	62						
4842904035	HPIN20/10SUSH7	2	50/P	4	61						
4843072154	RTP-2B2A391JDT	1	10/P	7	136					R36	
			110/P	7	152					R52	
4843072167	RTP-2B2A472JDT	1	10/P	7	103					R3	
			110/P	7	104					R4	
			110/P	7	107					R7	
			110/P	7	108					R8	
			110/P	7	111					R11	
			110/P	7	112					R12	
			110/P	7	115					R15	
			110/P	7	116					R16	
			110/P	7	118					R18	
			110/P	7	119					R19	
			110/P	7	120					R20	
			110/P	7	121					R21	
			110/P	7	122					R22	

PARTS NO.	PARTS NAME	Q'TY / PAGE	Q'TY / PACK	PAGE	ITEM NO.	PIR	BSI NO.	SERIAL NO.	REMARKS	LOCATION	C
4843072167	RTP-2B2A472JDT	110/P	7	124						R24	
		110/P	7	125						R25	
		110/P	7	126						R26	
		110/P	7	127						R27	
		110/P	7	130						R30	
		110/P	7	131						R31	
		110/P	7	132						R32	
		110/P	7	133						R33	
		110/P	7	135						R35	
		110/P	7	137						R37	
		110/P	7	140						R40	
		110/P	7	141						R41	
		110/P	7	144						R44	
		110/P	7	145						R45	
		110/P	7	147						R47	
		110/P	7	148						R48	
		110/P	7	149						R49	
		110/P	7	151						R51	
		110/P	7	153						R53	
		110/P	7	154						R54	
4843072175	RTP-2B2A223JDT	110/P	7	102						R2	
		110/P	7	105						R5	
		110/P	7	106						R6	
		110/P	7	109						R9	
		110/P	7	110						R10	
		110/P	7	113						R13	
		110/P	7	114						R14	
		110/P	7	117						R17	
		110/P	7	123						R23	
		110/P	7	128						R28	
		110/P	7	129						R29	
		110/P	7	134						R34	
		110/P	7	138						R38	
		110/P	7	139						R39	
		110/P	7	142						R42	
		110/P	7	146						R46	
		110/P	7	150						R50	
		110/P	7	156						R56	
		110/P	7	159						R59	
		4843077095	RD-Z2HL103JBF	110/P	7	101					
4843112454	IC-MC74HC244FL	15/S	7	2						IC2	
		15/S	7	5						IC5	
		15/S	7	8						IC8	
4843116255	IC-MC74HC273AFL	11/S	7	4						IC4	
		11/S	7	7						IC7	
4843232255	SP-CS1A-B2CA	21/D	3	33							
4843304937	J-53052-1110	15/P	7	206						CN246	
4843304944	J-53052-0410	15/P	7	202						CN242	
4843306196	J-0-175487-8	15/P	7	203						CN243	
4843307787	J-53313-3015	15/P	7	201						CN241	
4843307997	J-53324-0810	15/P	7	204						CN244	
4843308002	J-53324-1310	15/P	7	208						CN248	
4843308003	J-53324-1410	15/P	7	207						CN247	
4843309862	J-54702-1211	15/P	5	6							
4843309863	J-55533-1211	25/P	3	32							
4843390381	CLP/W-4253	75/P	2	23							
4843390872	PWZ-SPLS-8U	45/P	2	26							
4843390887	CLP/W-WS-1U	15/P	2	18							
4843390888	CLP/W-WS-2U	15/P	2	17							
4843391367	BD/W-EDS-0607M	15/P	2	24							
		25/P	5	19							
4843410721	CTP-M1B1H102KT	110/P	7	30						C10	
		110/P	7	31						C11	
4843410725	CTP-M1B1H222KT	110/P	7	29						C9	
4843410862	CTP-K1F1E104ZT	110/P	7	25						C5	
		110/P	7	32						C12	
		110/P	7	33						C13	

PARTS NUMBER INDEX

PARTS NO.	PARTS NAME	Q' TY	Q' TY	PAGE	ITEM NO.	P	I	R	B S I NO.	SERIAL NO.	REMARKS	LOCATION	C	
		/ PAGE	/ PACK											
4843410862	CTP-K1F1E104ZT	1	10/P	7	34							C14		
		1	10/P	7	35								C15	
		1	10/P	7	36								C16	
4843412139	CTP-M1F1H104ZT	1	10/P	7	37							C17		
		1	10/P	7	26								C6	
		1	10/P	7	27								C7	
		1	10/P	7	28								C8	
4843413736	CE-04WG1H106MB	1	10/P	7	38							C18		
		1	10/P	7	23								C3	
4843413749	CE-04WQ1E107MB	1	10/P	7	24							C4		
		1	10/P	7	22								C2	
4843413758	CE-04WQ1H476MB	1	10/P	7	21							C1		
66099416	MY-1017	1	SUPPLY	8	1						Cassette Module			

TOSHIBA

TOSHIBA TEC CORPORATION

1-1, KANDA NISHIKI-CHO, CHIYODA-KU, TOKYO, 101-8842 JAPAN